

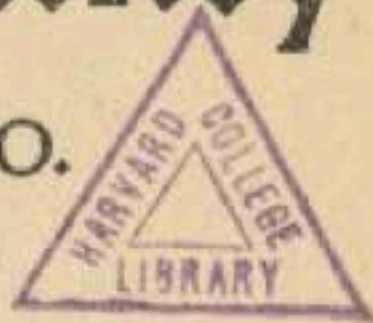
0

2001 624111
4535791.01

Luna County

by

NEW MEXICO.

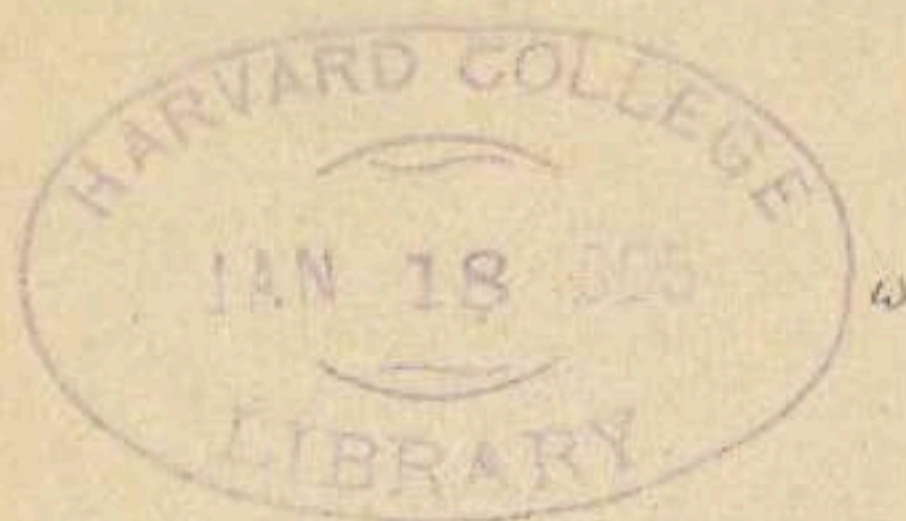


One of the Leading Stock and Range
Sections of the Southwest; a
Heavy Mineral Producer
and a Railroad Center.



By the Bureau of Immigration of the Terri-
tory of New Mexico.

J. S. DUNCAN, Public Printer.



Gratis

For further information call on or address:

BUREAU OF IMMIGRATION:

W. B. Bunker, President, Las Vegas.
Granville Pendleton, Vice-President, Aztec.
J. W. Bible, Treasurer, Hanover.
Max Frost, Secretary, Santa Fe.
Alfred Grunsfeld, Albuquerque.
Jose E. Torres, Socorro.

Published by the authority of the Territory
of New Mexico.

LUNA COUNTY.

Area, 1,935,360 acres.

Population, 3,500 (estimated.)

Assessed valuation, \$1,606,314.15.

County seat, Deming.

NEWSPAPERS.

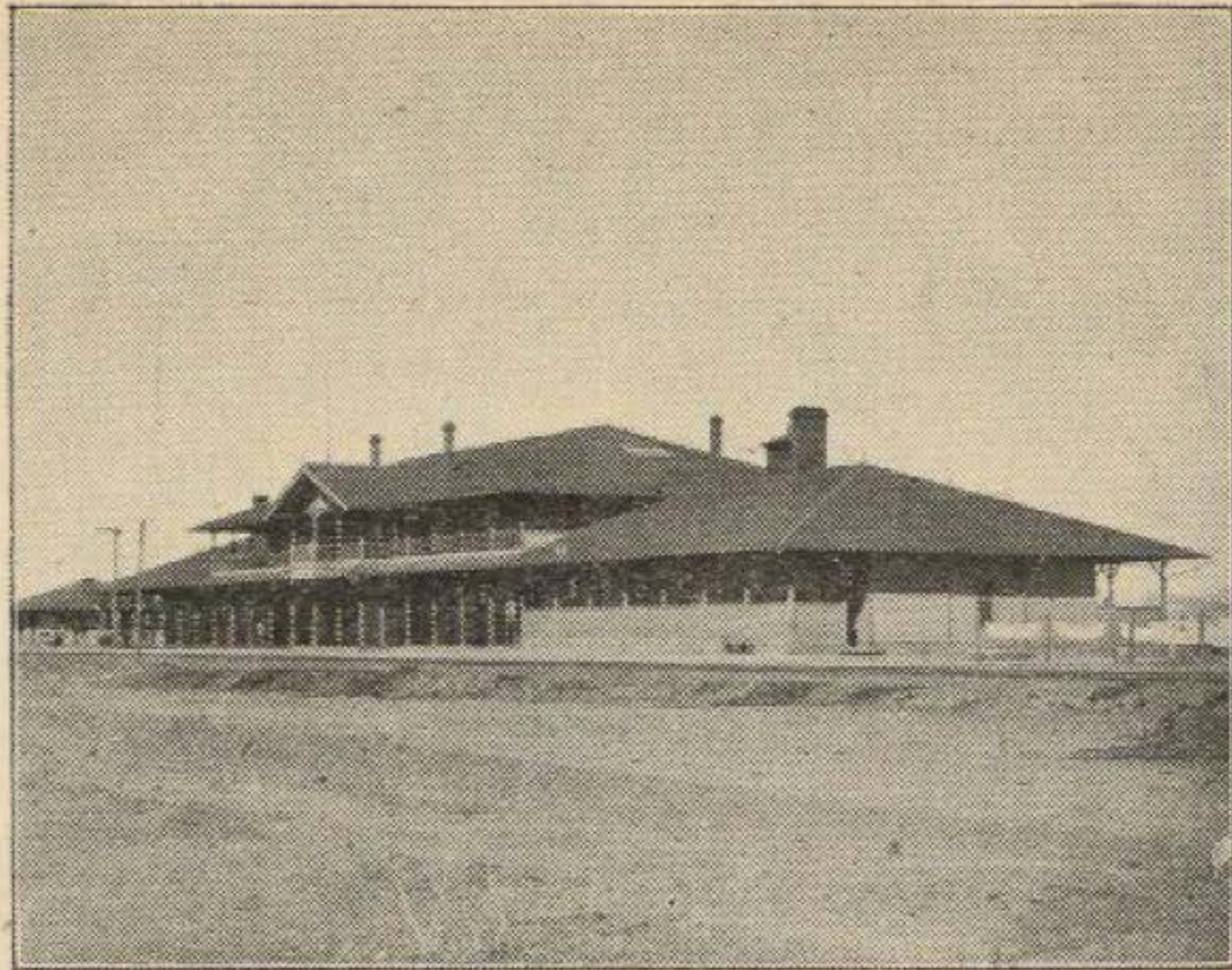
The Deming Headlight, Deming.

The Deming Graphic, Deming.

POSTOFFICES.

Deming, census population 1,341, present population, estimated 2,000; Cooks, census population of precinct 504; Columbus, Cybar, Gage, Cambray, Hermanas, Nutt, Jose.

Luna County, which was created by the 34th Legislative Assembly, and organized April 1, 1901, is in the extreme southern part of the territory, bordering upon Mexico, and having between it and the Arizona line on the west, a narrow extension of Grant County which also touches the line of Mexico. The county extends fifty-six miles north and south, and fifty-four miles east and west, and contains 1,935,360 acres, being two and one-half times the size of Rhode Island. During the fiscal year ending June 30, 1903, there were entered under the federal land laws, in Luna County, 2,994 acres; the homestead applications having been twelve, covering 1,800 acres; the lieu



The Union Depot, Deming.

selections four, covering 354 acres; the final homestead entries five, covering 760 acres, and one desert land entry, covering eighty acres. There are 1,671,000 acres of public land in the county subject to entry under the federal land laws. The federal land office for the county is at Las Cruces.

The Mimbres River traverses it from north to south. There is running water in its upper course, but lower down it sinks. It is primarily a cattle and mining country, although it has a fine rich soil which can be made to produce abundant crops of all sorts, as well as fruits of the finest quality, through the medium of irrigation. The returns of the assessor's office give the amount of agricultural land under irrigation and cultivated or used for stock feeding purposes as 9,253 acres, although as the county develops, there will no doubt be hundreds of thousands of acres added to it.

The last census was taken while Luna County was still a part of Grant, but the census population of the part now included in Luna County was 2,431. It is at present about 3,500, over one-half of which is in Deming, the county seat.

RAILROADS.

Three railroad lines, the Southern Pacific, the El Paso and Southwestern, and the Atchison, Topeka and Santa

To sum up: Luna County has within its borders the untold treasures of the hills; great herds of cattle which feed and thrive upon the nutritive natural grasses which cover its plains and mountains; an inexhaustible body of water a short distance beneath the surface, which through the medium of windmills and small engines can be made available easily and cheaply; a climate unsurpassed in all the world; a soil that will produce, through irrigation, almost anything in the way of crops; complete railroad facilities; good schools; a law abiding, thriving, intelligent people, and an economically administered county government.