



THE "BURSTED" BOOM.





A. JACKSON'S SPIRIT AMONG THE OLD DEMOCRATIC WAR HORSES.



THE SOUTHDOWN LAMB AND THE DOWN-SOUTH MAN.

A Highly Moral Ballad with the Latest Variations.

(Same Tune as Mary's Lamb.)

Columbia had a little lamb, Its fleece was white as snow, And many farmers showed the wool That on the sheep did grow.

Then Mills, of Texas, said the ram Disturbed the Free-Trade School, The lambskin knocked the teacher out,-- Regardless of the rule.

When Mills' remains were gathered up, With others of his side, Through Charley's Customs House they passed Free raw materials!

"Why love that lamb?" the nations asked, Columbia did reply: "In case of war that lamb's the sheep On which I can rely!"

THE HEART OF AFRICA.

Oh, fare you well, my sweetheart true; Farewell for a year and a day; For I'm going to sail on the Sankara, In the heart of Africa.

I'm going to capture a cockaboo On the banks of the broad Kasool, And take a swim in the bright Danoo, In the heart of Africa.

I'm going to camp with the wild Zulu, And shoot with an assegai, And chase the spiral horned koodoo, In the heart of Africa.

I'm going to paddle my own canoe On the silvery Ogweel, Till I come to the city of Salaka, In the heart of Africa.

If I don't return, oh, sweetheart true, At the end of a year and a day, Think not I'm drowned in the Sankara, In the heart of Africa.

For there may be reasons unknown to you Why I cannot get away; I may marry the Queen of Karague, In the heart of Africa. --Fitz Steep, in Harper's Monthly.

"This is a sad and bitter world," remarked a gentleman of Irish extraction. "We never straw flowers on a man's grave until after he is dead."

AMUSEMENTS.

Bush-street Theater.

M. E. LADDY, Proprietor; CHAS. P. HALL, Manager

Last "Natural Gas" Matinee This Afternoon.

LAST NIGHTS! LAST NIGHTS!

Of the Laughing Success.

"NATURAL GAS!"

FARRING TO THE COURTIARD.

DONNELLY -- and -- GIRARD!

and

THREE SEVEN COMPANY.

NEXT WEEK, Monday, November 10th

The Representative Irish-American Actor,

DAN L. SULLY.

Alcazar Theater.

Geo. Wallbridge, Solo Manager

Evening at 8. Saturday Matinee at 2. First time in this city of Kate Charles's Success, by Frank Harvey, entitled

The World Against Her!

Presented with a Grand Cast.

GEORGE OSBOURNE, L. R. STOCKWELL

and THE ALCAZAR THEATRE COMPANY.

PRICES: Evening, 50c, 75c and 1.00; Matinee, 25c and 50c.

NOTE:--Every purchaser of a reserved seat will receive an order on Ottinson, Fish & Co., Fishin' Building, for a life-size cigar Portrait of themselves, free of charge.

Hijou Theater.

AMUSEMENT PARADISE.

Market street, opposite Grand avenue. Loans and Proprietor, Wm. Keenan; Manager, N. D. Bennett

The Prettiest and Coziest Theater in the city. A Beautiful Family Resort.

Patronized by the Elite.

Every Night (including Sun.) Matinee Saturday

Popular Follies--The, etc., etc. So Extra.

EMERSON'S MINSTRELS.

RAMONA, EVANGELINE, ETC. -- Tenor Women.

Positively the last week of the Only Women's grand opera burlesque, MARY TANNER.

Next week--First time of THE COLORED GOLDEN WEDDING.

Also first time of BOKED AND JULIET.

Also first time of CHEN CHOW HU, with the Japs.

Box office open from 9 A. M. to 10 P. M.

AMUSEMENTS--Continued.

Tivoli Opera House.

Eddy St., near Market. KANAKO DANI, Proprietress and Manager

The Musical Event of the CAMPOBELLO GRAND OPERA SEASON.

UN BALLO IN MASCHERA.

Srs. EDENE CANTONILE and

First appearance of the Charming Finesse

EDENE.

ESMERALDA DE VALERIO as

Clair of the Fatti Grand Opera Co. Miss

WALTON Director in her favorite role

of

First appearance on any stage of

Miss BLANCHE ARNETT as

Clair and the other Personnel of our Star Co.

MANAGEMENT BY MISS EDENE CANTONILE!

ITALIAN OPERETTA AND COMEDY!

Our Popular Follies

THE AND THE

WATERLOO REPLACED BY

THE PANORAMA

OF THE LAND AND NAVAL

Battles of Vicksburg,

Painted at the suggestion of

GEN. GRANT.

Open Daily from 9 A. M. to 11 P. M.

Hourly Lectures by CHARLES J. J. AKER of the U.S.A. Armies

Illustrated Catalogues Free.

PANORAMA BUILDING.

Corner Mason and Eddy Streets.

Protective Tariff Literature

Applied to clubs upon written application of their officers by the

AMERICAN PROTECTIVE TARIFF LEAGUE of CAL.

Headquarters, Prince Hotel, Paris A.

All persons in sympathy with protection to American labor are cordially invited to visit the League's room. Orders for literature by mail, city or country, delivered free of charge.

W. W. MONTAGUE, President.

J. J. SERRA, Secretary.

GRATEFUL--COMFORTING.

EPPS'S COCOA.

BRKFAST.

"By a thorough knowledge of the natural laws which govern the operations of digestion and assimilation, and by a careful application of the fine properties of well selected Cocoa, Mr. Epps has prepared our breakfast table with a deliciously flavored beverage which may save us many heavy doctors' bills. It is by the judicious use of such articles of diet that a constitution may be gradually built up until strong enough to resist every tendency to disease. Beware of cheap imitations are leading around us ready to attack wherever there is a weak point. We may escape many a fatal shaft by keeping ourselves well fortified with pure food and a properly balanced brain."--Civil Service Gazette.

Made simply with boiling water or milk. Sold only in half-powder form, by Grocers, labeled thus:

JAMES EPPS & CO., Homoeopathic Chemists,

London, England.

San Francisco Depot:

SHERWOOD & SHERWOOD,

212 and 214 Market Sts.

NAPA SODA SPRINGS.

THE GEM OF NAPA VALLEY.

1000 FEET HIGH.

PRINCE OF PLEASURE RESORTS

HOT SODA WATER BATHS.

SWIMMING POOL IN NATURAL

ROCKY BED.

Hotel Always Open.

WORK FOR ALL, \$20 a week and expenses paid. Samples with \$5 and particular F.V.S. P. O. TICKET, Augusta, Maine.

The Finest Meat-Flavoring Stock.

LIEBIG COMPANY'S

EXTRACT OF MEAT

USE IT FOR SOUPS,

Beef Tea, Sauces and Made Dishes,

Genuine only with fac-simile of Baron Liebig's

SIGNATURE IN BLUE INK

Always Label.

Sold by all Grocers, Grocers and Druggists.

LIEBIG EXTRACT OF MEAT Co., Limited, London.

Sold Wholesale by SHERWOOD & SHERWOOD, and LANGLEY & MICHAEL.

TO THE UNFORTUNATE.

DR. GIBBON'S DISPENSARY.

623 KEMANY ST.

San Francisco

Established in 1854

for the treatment of

Neural and Senescent

Diseases, Insomnia,

Weakness, Tremor,

and Loss of Memory

permanently cured.

The doctor and afflicted

should not fail to call

upon him. The

Doctor has visited

the hospitals of Europe

and obtained a

great deal of valuable

information, which he is

compelled to impart to

those in need of his services.

DR. GIBBON

will make no charge unless he

effects a cure. The

Doctor comes when others

fail. Try him.

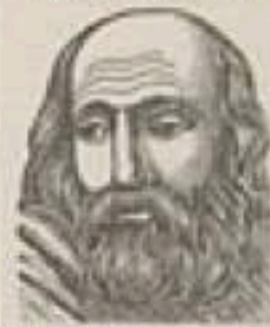
Prescriptions sent at home.

Call or write. All

communications strictly

confidential. Address

DR. J. F. GIBBON, Box 1027, San Francisco.



"NEVER KNOWN TO FAIL."

TARRANT'S EXTRACT

CUBEBS AND COPAIBA

Is an old, tried remedy for gonorrhoea, gleet, and all diseases of the urinary organs. Its use, portable form, freedom from taste and speedy action are frequently causes in those on long trips and at sea in less time than any other preparation. Tarrant's Extract is the most reliable remedy ever manufactured.

To prevent fraud see that each package has a red star upon the face of label, with the signature of TARRANT & CO., N. Y., upon it. PRICE 25c.

Sold by all Druggists.

MT. VERNON COMPANY,

BALTIMORE.

THE UNDERSIGNED, HAVING BEEN APPOINTED AGENTS FOR THE PACIFIC COAST for the sale of the manufactures of the above company, have to state:

RAIL DUCK--All Numbers.

HYDRAULIC--All Numbers.

DRAPER and WAGON DUCK.

From 20 to 120 inches wide, and a complete assortment of all qualities by each DUCK, from 7 cent. to 12 cent., included.

MURPHY, GRANT & CO.

E. C. WEBSTER & CO.

INVESTMENT BANKERS

LEADING DEALERS IN

CHOICE INVESTMENT BONDS,

First-Class Real Estate, Improved

City Property, First Mortgages,

Farm Loans, etc., etc.

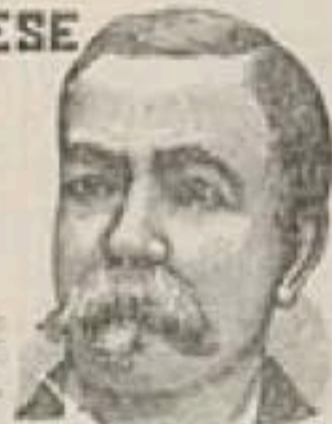
No. 10 EXCHANGE BLOCK,

PASADENA CAL.

THE CHINESE MUST GO!

THE REGULAR ANTI-CHINESE

DR. C. C. O'DONNELL TICKET



The Best Coroner and will make the Best Mayor San Francisco ever saw.

SEE THAT THE DOCTOR'S NAME IS ON YOUR TICKET.

A VOTE FOR O'DONNELL IS A VOTE AGAINST BOSSES AND THE CHINESE CURSE.